



WHC SOLAR

WHC-50KW-Li-100.352KWH Solar Energy Storage System

Indoor Rack Mounted Energy Storage System, Modular design, good compatibility, flexible configurations of system capacity.



Versatile

Support peak shaving and valley filling, demand-side response, backup power supply and other main functions; Support remote update of operating strategy and firmware upgrade, lower operating and maintenance costs.



Flexible and convenient

Modular PCS, linear expansion battery unit and energy storage bidirectional inverter unit; It has the ability to independently charge and discharge control of multiple groups of batteries to improve battery utilization and safety.



High integration

System productization, integration of Battery, fire protection, PCS, temperature control, and monitoring communication, fully control the system operation status and risks; One-stop delivery, shorten the installation and commissioning cycle.



Safety intelligence

Fault classification processing mechanism to respond to preset fault scenarios; Customized BMS to provide perfect measurement and protection functions; Support cloud scheduling and operation report analysis.

CONFIGURATION LIST



WHC-50KW-Li-100.352KWH Solar Energy Storage System Components List

NO.	Item	Quantity
1	50KW/100.352Kwh Solar Energy Storage System	1 Set
2	550W Solar Mono Panel	108 Pieces
3	50KW Hybrid Inverter	1 Pieces
4	Battery Cable RVI*50m ² 50cm	8 Pieces
5	PV Combiner Box: N4 Plus	1 Pieces
6	PV Cable 1*10mm 100M	2 Pieces
7	Solar Panel Bracket	1 Set
8	MC4 Solar Cable Connector	30 Pieces
9	Solar PV Crimping Tool Kit	1 Set

CONFIGURATION DETAIL



50KW/100.352Kwh Solar Energy Storage System

Battery Data

1. Battery chemistry Lithium Iron Phosphate(LiFePo4)
2. Cell Spec: 3.2V/280Ah
3. String configuration: 1P112S
4. Rack Rated Energy Capacity: 100.352KWh
5. Nominal Voltage: 358.4V
6. Cycle: >6000(@25°C , 0.5C/0.5C)

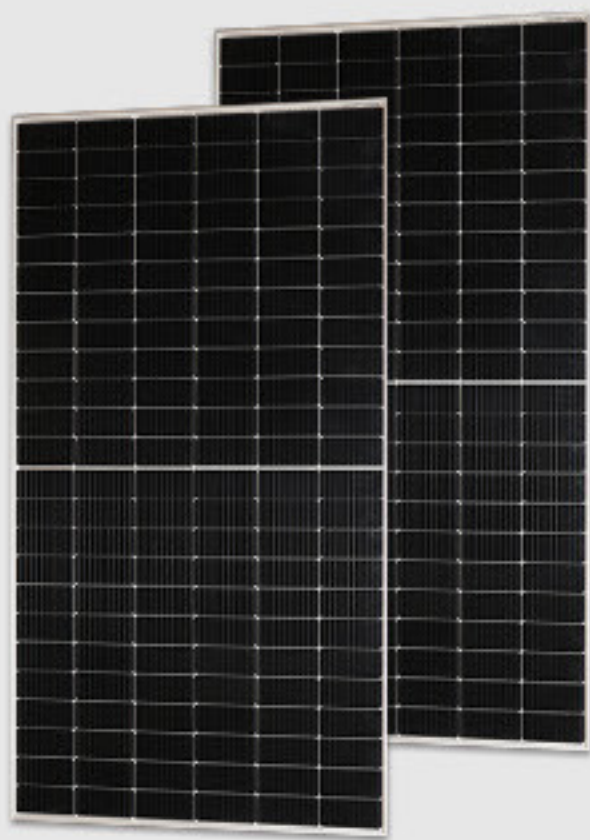
AC Data

1. Max output power: 50KW
2. Max output current: 50A
3. Rated voltage: 230V(single phase)/400V(3 phase)
4. Max Efficiency 98.1%

BMS Hight Box

1. Type: 0-1500V, 140A
2. 2-Stage BCMU, BMU Architecture,
3. High voltage control box
4. Ethernet communication and upgrade interface
5. Master-slave stable structure for system operation





Mono Solar Panel

1. Model: WHC-550M-144
2. Voc: 49.95V; Vmp: 41.97V
3. IMP: 12.97A; ISC: 13.86A
4. Module Efficiency: 20.9%
5. Operating Module Temperature: -40°C to $+85^{\circ}\text{C}$
6. Maximum System Voltage: 1500V DC

50KW Hybrid Inverter

1. Max PV input power:100KW
2. PV Open Circuit Voltage range:1000V
3. MPPT Working Voltage Range:150~850V
4. Automatic switching



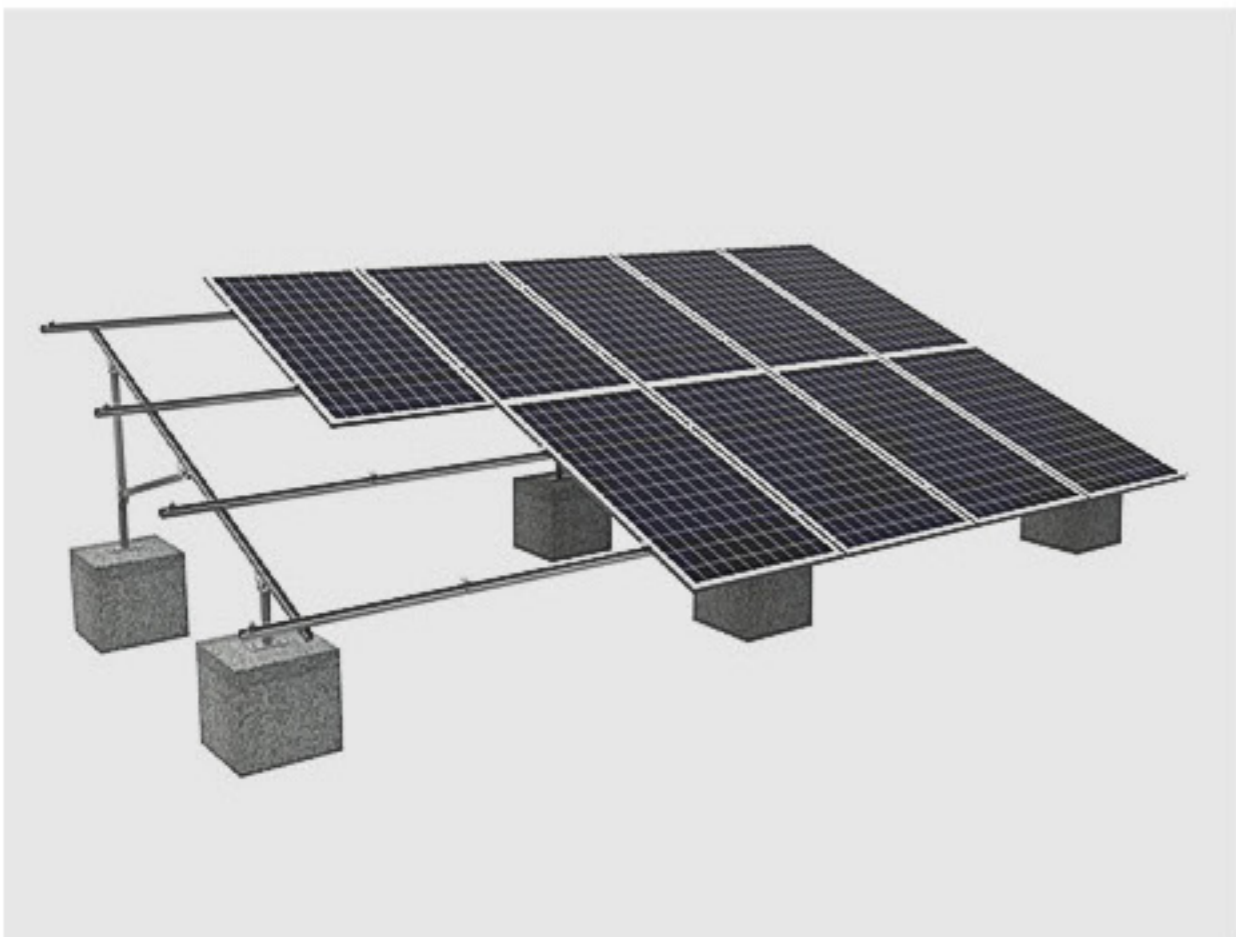
PV Combiner Box

1. Combiner Box: N4 Plus
2. Waterproof IP65
3. Max output Voltage: 1000V
4. DC Output Circuit Breake: Yes
5. Lightning Protection: Yes

PV Cable

1. PV Cable 1*10mm 100M
2. Withstanding large temperature range
3. Humidity and water resistance
4. UV resistance
5. Acid and alkali resistance
6. Ozone resistance





PV Mounting Support

1. Solar Panel Bracket
2. Wind load: 55m/s
3. Structure: Anodized Aluminum
4. Stainless Steel, Angle Adjustable

MC4 Solar Cable Connector

1. Rated Current: 30A
2. Rated Voltage: 1000VDC
3. Waterproof Protection: IP67



Battery Cable

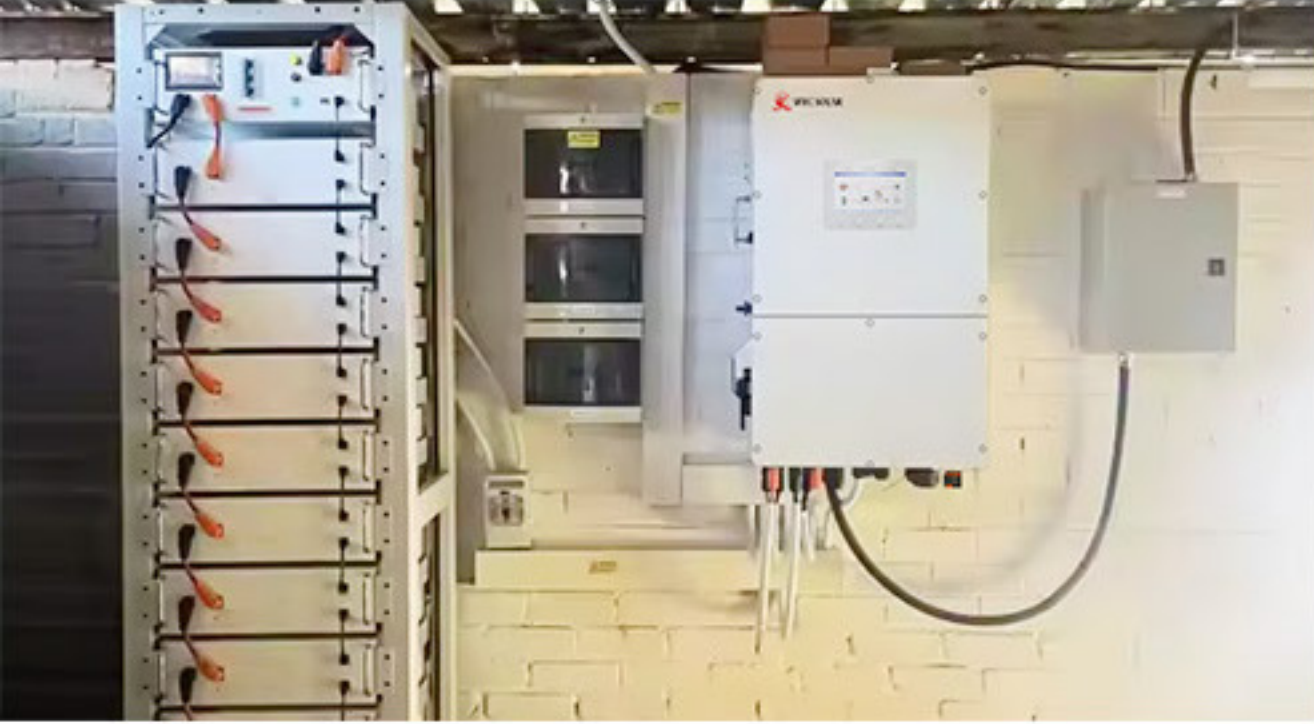
1. Type: RV1*50mm² 50CM
2. Material: Pure Copper
3. Temperature Rating: -40°C-120°C , More than 25 Years

Solar PV Crimping Tool Kit

1. Solar crimping tool
2. Wire Stripper
3. Connector Spanner Wrench
4. MC4 Solar Cable Connector*5



SOLAR SYSTEM PROJECT





WHC Global Agent Plan

To Help 300 agents succeed in their solar business career.



[Inquiry Now](#)